

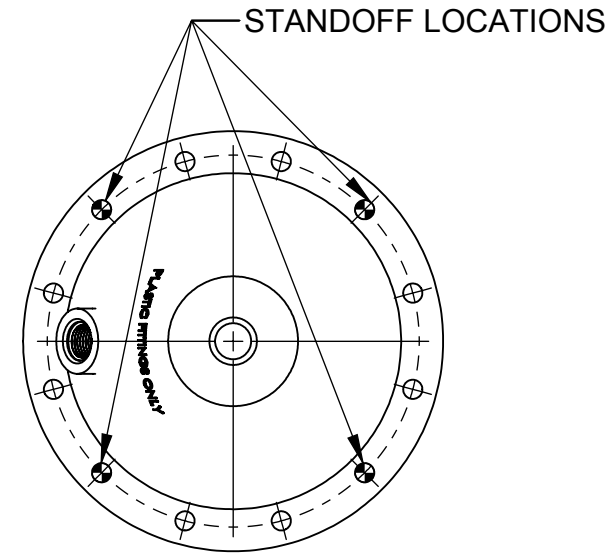
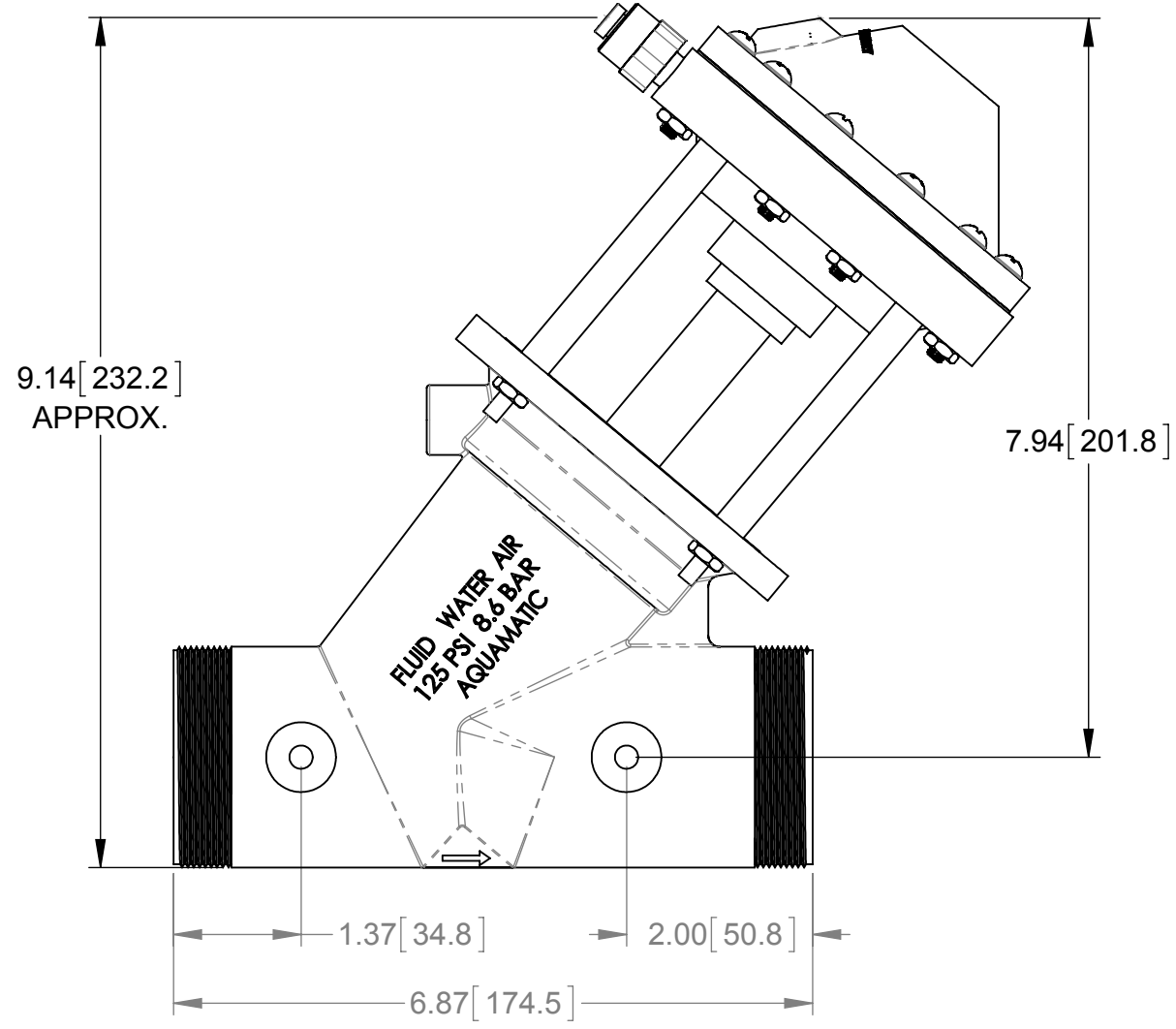
5

4

3

2

1

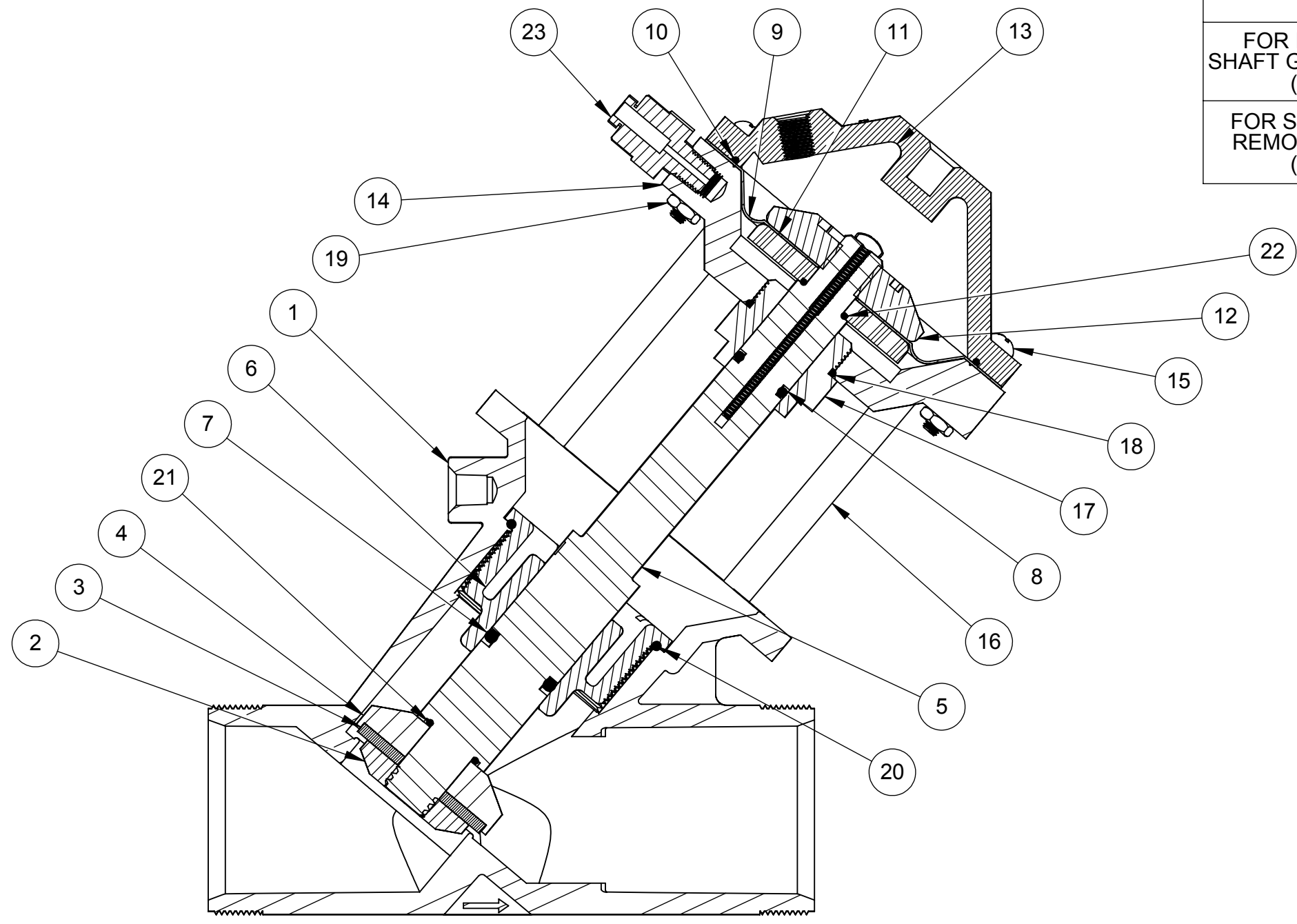


REVISIONS					
ZONE	ECN	REV.	DESCRIPTION	DATE	APP'D
	102135	H	REDRAWN IN SOLIDWORKS, FORM # NOW DWG # (WAS-1084015)	06-27-13	TJM
	1001	J	AQ Matic update & verified part numbers	17JAN17	MGS

REPAIR PARTS KITS		
DESCRIPTION	PART NO.	
DIAPHRAGM & SEALS KIT CONSISTS OF ITEM NO'S 3,7,8,9, 10,18, 20, 21, 22	1075377	1075378
	EPDM INCLUDES DIAPHRAGM 1075377	BUTYL INCLUDES DIAPHRAGM 1075104
	1075379 FKM INCLUDES DIAPHRAGM 1075104	
INT. PARTS KIT (NORM. OPEN) CONSISTS OF ITEM NO'S 2,4,5,6,11,12,17	1071434	

ASSEMBLY TOOLS	
DESCRIPTION	PART NO.
FOR INSTALL & REMOVAL OF SHAFT GUIDE & DIAPHRAGM PLATE (TOOL NOT SHOWN)	1075143
FOR SHAFT WHEN INSTALL. OR REMOVING DIAPHRAGM PLATE (TOOL NOT SHOWN)	1075060

ITEM NO.	DESCRIPTION	PART NUMBER	QTY	
1	BODY, VALVE 524	1075079	1	
2	PLATE, DISC, 524	1076198	1	
3	DISC	EPDM	1075107	1
		BUTYL	1075108	1
		FKM	1075109	1
4	HOLDER, DISC, 5524	1075121	1	
5	SHAFT (SERIES 5524),	1075372	1	
6	GUIDE,SHAFT,524,BLACK	1075106	1	
7	O-RING, 2-210	EPDM	1071744	1
		BUTYL	1071776	1
		FKM	1071815	1
8	O-RING, (EPDM) 2-113	1071728	1	
9	DIAPHRAGM, 524, PURCHASED	1078393	1	
10	O-RING, 2-043 NITRILE	1071686	1	
11	PLATE,DIAPHRAGM,5524,LOWER	1075375	1	
12	PLATE,DIAPHRAGM,5524,UPPER,BLK	1075101	1	
13	CAP,524, VALVE	1075086	1	
14	CAP, STANDARD BOTTOM	1075371	1	
15	SCREW, RND HD, #10-32X1 1/4"LG	1072382	12	
16	STANDOFF, 5524, SS	1075374	4	
17	BUSHING, GUIDE	1075376	1	
18	O-RING,2-025,NITRILE	1071677	1	
19	HEX NUT, 10-32, SS	1071648	12	
20	O-RING, 2-137	EPDM	1071735	1
		BUTYL	1071771	1
		FKM	1071807	1
21	O-RING, -016	EPDM	1071719	1
		BUTYL	1071761	1
		FKM	1071789	1
22	O-RING,2-015,NITRILE	1071670	1	
23	CONNECTOR, 1/8 MNPT X 1/4T,PLS	1078767	1	



REPAIR PARTS KITS			
DESCRIPTION	PART NO.		
DIAPHRAGM & SEALS KIT CONSISTS OF ITEM NO'S 3,7, 8, 9, 10, 19, 20, 21, 22	1075377 EPDM INCLUDES DIAPHRAGM 1075377	1075378 BUTYL INCLUDES DIAPHRAGM 1075104	1075379 FKM INCLUDES DIAPHRAGM 1075104
INTERNAL PARTS KIT CONSISTS OF ITEM NO'S 2, 4, 5, 6, 11, 12, 18	1071434		

1071435 (K554-X200-14000)  
**NORMALLY OPEN**

SEE SHEET 1078150 FOR SOCKET WELD & FLANGED ADAPTORS  
SEE SHEET 1078140 FOR SOCKET WELD & PIPE ADAPTORS

SEE REVERSE SIDE FOR STANDARD NORMALLY OPEN MODEL

COMPONENTS / ASSEMBLIES TO BE COMPLIANT AND COMPATIBLE WITH EUROPEAN UNION DIRECTIVE 2011/65/EEC (ROHS2) & REGULATION (EC)1907/2006 (REACH) REQUIREMENTS

THIS DOCUMENT IS SOLELY THE PROPERTY OF AQ Matic VALVE & CONTROLS COMPANY INC. REPRODUCTION, USE, DISCLOSURE, OR TRANSMISSION OF THIS DOCUMENT OR DETAILS CONTAINED HEREIN, IN PART OR IN WHOLE, IS PROHIBITED WITHOUT THE WRITTEN CONSENT OF AQ Matic ENGINEERING. THIS DOCUMENT AND ANY COPIES SHALL BE RETURNED TO AQ Matic UPON REQUEST.

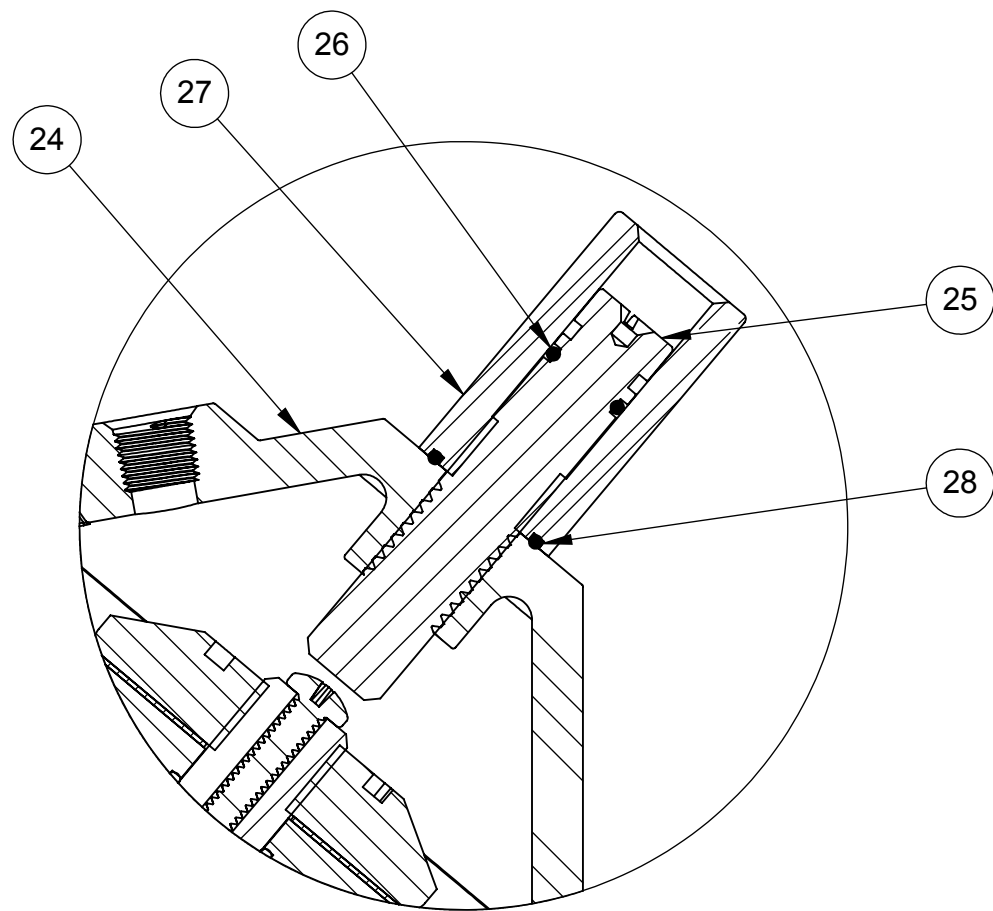
DO NOT SCALE DRAWING. DIMS. ARE IN INCHES [mm]  
INTERPRET DIMS AND TOLERANCES PER ASME Y14.5M -2009  
UNLESS OTHERWISE SPECIFIED:  
ALL FINISHED MACHINED SURFACES 125 ✓ OR BETTER.  
TOLERANCES:  
ANGLES: ± 1°  
1 PLACE .X: ± .015 [0.38]  
2 PLACE .XX: ± .01 [0.3]  
3 PLACE .XXX: ± .005 [0.13]

THIRD ANGLE PROJECTION	APPROVALS	DATE	<p><b>AQ Matic</b> Valve &amp; Controls Company Inc.</p>
DRAWN	MWL	06-27-13	
APPROVED			
CHECKED			

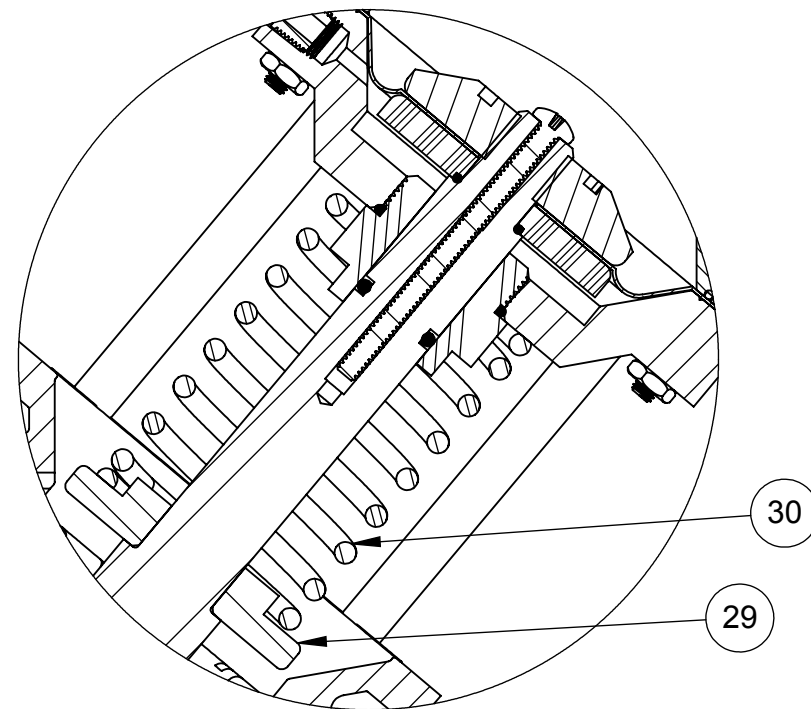
TITLE: CATALOG SHEET, 5524

SIZE: **B** DWG NO.: **BR1077694** REV: **J**

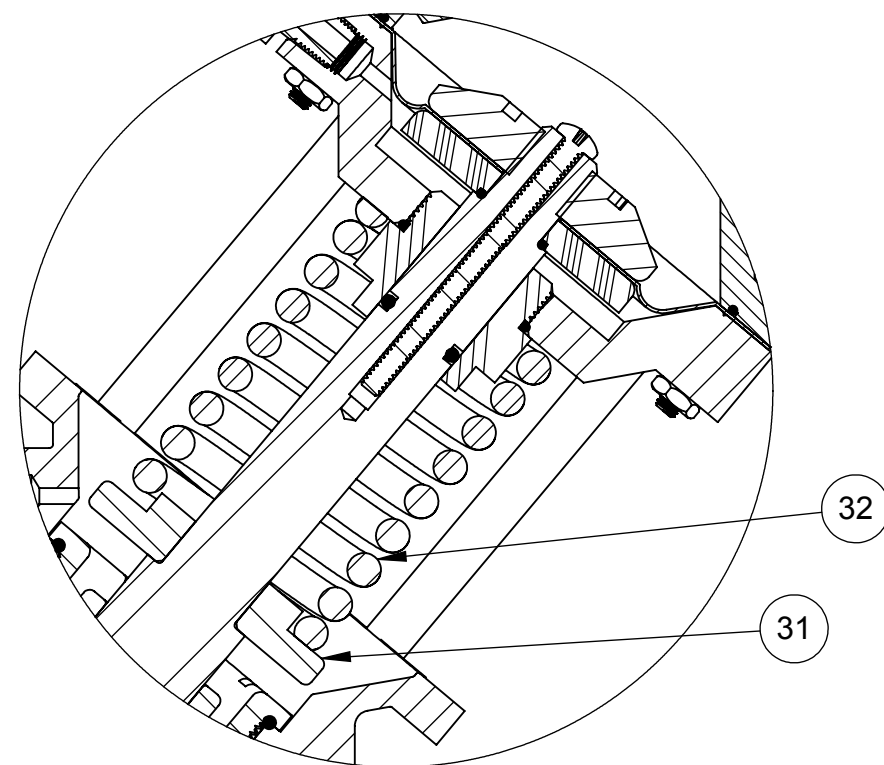
SCALE: 1:2 SHEET 1 OF 2



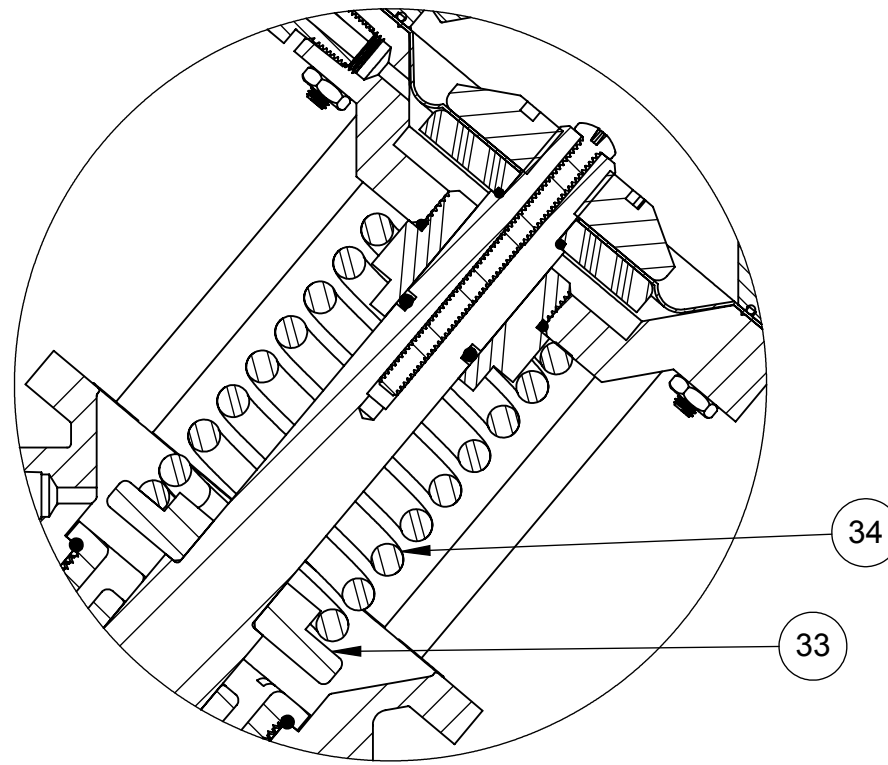
1079768 (K554-X210-14000)  
**LIMIT STOP**



1071438 (K554-X203-14000)  
**FAILSAFE SPRING CLOSED 30 PSI**



1071439 (K554-X204-14000)  
**FAILSAFE SPRING CLOSED 60 PSI**



1071442 (K554-X205-14000)  
**FAILSAFE SPRING CLOSED 100 PSI**

REVISIONS					
ZONE	ECN	REV.	DESCRIPTION	DATE	APP'D
			SEE SHEET 1 FOR LIST OF CHANGES		

LIMIT STOP MODEL			
ITEM NO.	DESCRIPTION	PART NUMBER	QTY.
24	CAP, LIMIT STOP,524	1075083	1
25	LIMIT STOP SCREW, SS	1075142	1
26	O-RING,2-012,BUNA	1071668	1
27	LIMIT STOP NUT, SS	1075141	1
28	O-RING,2-016,BUNA	1071671	1

FAILSAFE SPRING CLOSED - 30 PSI			
ITEM NO.	DESCRIPTION	PART NUMBER	QTY.
29	RETAINER, SPRING, PVC	1075373	1
30	SPRING, COMPRESSION, SS	1077981	1

FAILSAFE SPRING CLOSED - 60 PSI			
ITEM NO.	DESCRIPTION	PART NUMBER	QTY.
31	RETAINER, SPRING, PVC	1075373	1
32	SPRING, CMPRSN SERIES 4424	1267397	1

FAILSAFE SPRING CLOSED - 100 PSI			
ITEM NO.	DESCRIPTION	PART NUMBER	QTY.
33	RETAINER, SPRING, PVC	1075373	1
34	SPRING, COMPRESSION	1077983	1

**NOTE:**

- LIMIT STOP OPTION ONLY OFFERED ON FAIL SAFE SPRING CLOSED MODELS.
- FAILSAFE OPTION NOT OFFERED IN CONVERSION KIT FORM DUE TO SPECIAL ASSEMBLY REQUIREMENTS.
- LIMIT STOP CONVERSION KITS NOT OFFERED DUE TO FAIL SAFE OPTION ASSEMBLY REQUIREMENTS.

SEE SHEET 1078150 FOR SOCKET WELD & FLANGED ADAPTORS  
SEE SHEET 1078140 FOR SOCKET WELD & PIPE ADAPTORS

SEE REVERSE SIDE FOR STANDARD NORMALLY OPEN MODEL

<small>COMPONENTS / ASSEMBLIES TO BE COMPLIANT AND COMPATIBLE WITH EUROPEAN UNION DIRECTIVE 2011/65/EEC (RoHS2) &amp; REGULATION (EC)1907/2006 (REACH) REQUIREMENTS</small> THIS DOCUMENT IS SOLELY THE PROPERTY OF AQ Matic VALVE & CONTROLS COMPANY INC. REPRODUCTION, USE, DISCLOSURE, OR TRANSMISSION OF THIS DOCUMENT OR DETAILS CONTAINED HEREIN, IN PART OR IN WHOLE, IS PROHIBITED WITHOUT THE WRITTEN CONSENT OF AQ Matic ENGINEERING. THIS DOCUMENT AND ANY COPIES SHALL BE RETURNED TO AQ Matic UPON REQUEST.						THIRD ANGLE PROJECTION 	<b>AQ Matic</b> Valve & Controls Company Inc.			
APPROVALS DATE		TITLE <b>CATALOG SHEET, 5524</b>								
DRAWN		DWG NO. <b>BR1077694</b>		REV <b>J</b>						
APPROVED		SCALE <b>1:2</b>		SHEET 2 OF 2						
CHECKED										
<small>DO NOT SCALE DRAWING. DIMS. ARE IN INCHES [mm]          INTERPRET DIMS AND TOLERANCES PER ASME Y14.5M-2009          UNLESS OTHERWISE SPECIFIED:          ALL FINISHED MACHINED SURFACES 125 ✓ OR BETTER.          TOLERANCES:          ANGLES: ± 1°          1 PLACE .X: ± .015 [0.38]          2 PLACE .XX: ± .01 [0.3]          3 PLACE .XXX: ± .005 [0.13]</small>										